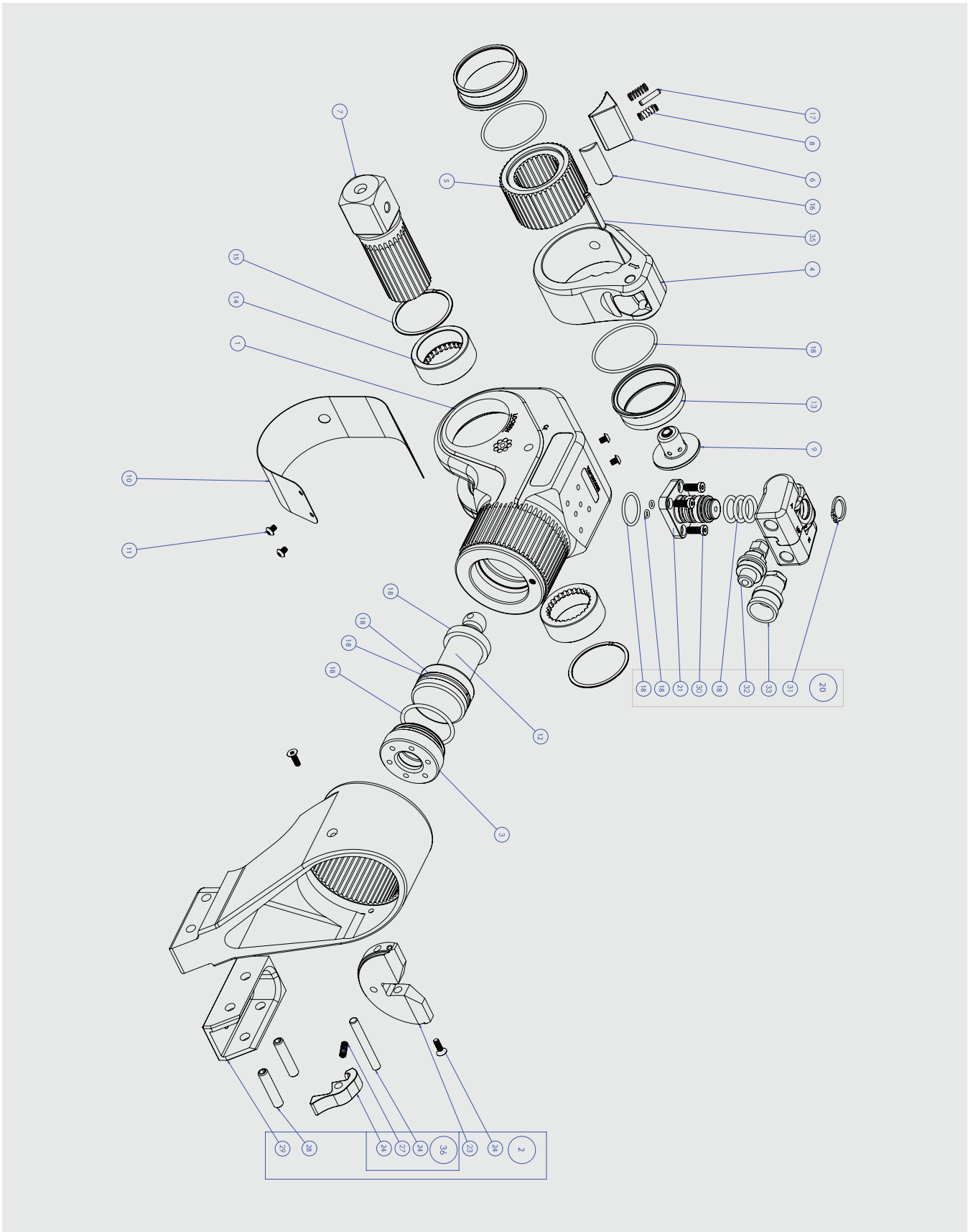


EDGE-S™ Hydraulic Torque Wrench



(Continued on next page.)

SPARE PARTS LIST

ITEM NUMBER	DESCRIPTION	QUANTITY	EDGE-.7S	EDGE-01S	EDGE-03S	EDGE-06S	EDGE-09S	EDGE-11S	EDGE-30S
1	Housing	1	EDGE-.7S-01	EDGE-01S-01	EDGE-03S-01	EDGE-06S-01	EDGE-09S-01	EDGE-11S-01	EDGE-30S-03
2	Reaction Arm Assembly	1	EDGE-.7S-03	EDGE-01S-03	EDGE-03S-03	EDGE-06S-03	EDGE-09S-03	EDGE-11S-03	EDGE-30-03
3	End Cap Sleeve W/Seal	1	MXT-.7-26	EDGE-02-26	EDGE-04-26	MXT-05-26	EDGE-08-26	MXT-10-26	EDGE-30-26
4	Drive Plate	1	EDGE-.5-04	EDGE-02-04C	EDGE-04-04C	EDGE-06-04C	EDGE-08-04C	EDGE-12-04C	EDGE-30-04
5	Ratchet	1	EDGE-.5-06	EDGE-02-06	EDGE-04-06	EDGE-06-06	EDGE-08-06	EDGE-12-06	EDGE-30-06
6	Drive Segment	1	EDGE-.5-60	EDGE-02-60	EDGE-04-60	EDGE-06-60	EDGE-08-60	EDGE-12-60	EDGE-30-60
7	Square Drive	1	MXT-.7-05	XLT-01-05-1	XLT-03-05-1	XLT-05-05-1	XLT-08-05	XLT-10-05-1	EDGE-30-05
8	Drive Segment Spring	2	EDGE-.5-27	EDGE-02-27	EDGE-04-27	EDGE-06-27	EDGE-08-27	EDGE-12-27	EDGE-30-27
9	Square Drive Retainer	1	EDGE-.7S-11	EDGE-01S-11	EDGE-03S-11	EDGE-06S-11	EDGE-09S-11	EDGE-11S-11	EDGE-30S-11
10	Safety Shroud	1	EDGE-.5-31	EDGE-02-31	EDGE-04-31	EDGE-06-31	EDGE-08-31	EDGE-12-31	EDGE-30-31
11	Shroud Screws	4	EDGE-.5-32	EDGE-02-32	EDGE-04-32	EDGE-06-32	EDGE-08-32	EDGE-12-32	EDGE-30-32
12	Piston Rod Assembly	1	EDGE-.5-61	EDGE-02-61	EDGE-04-61	EDGE-06-61	EDGE-08-61	EDGE-12-61	EDGE-30-61
13	Drive Bushing	2	MXT-.7-07	EDGE-02-07	EDGE-04-07	EDGE-06-07	EDGE-08-07	EDGE-12-07	EDGE-30-07
14	Square Drive Sleeve	2	MXT-.7-08	XLT-02-08	XLT-03-08	XLT-05-08-1	XLT-08-08	XLT-10-08	EDGE-30-08
15	Drive Sleeve Retaining Ring	2	EDGE-.5-30	EDGE-02-30	EDGE-04-30	EDGE-06-30	EDGE-08-30	EDGE-12-30	EDGE-30-30
16	Segment Slider	1	EDGE-.5-66	EDGE-02-66-CY	EDGE-04-66-CY	EDGE-06-66-CY	EDGE-08-66-CY	EDGE-12-66-CY	EDGE-30-66
17	Segment Guide-Roll Pin	1	EDGE-.5-65	EDGE-02-65	EDGE-04-65	EDGE-06-65	EDGE-08-65	EDGE-12-65	EDGE-30-65
18	Seal Kit	1	EDGE-.5-62	EDGE-02-62	EDGE-04-62	EDGE-06-62	EDGE-08-62	EDGE-12-62	EDGE-30-62
19	Maintenance Kit	1	MK-EDGE-.5	MK-EDGE-02	MK-EDGE-04	MK-EDGE-06	MK-EDGE-08	MK-EDGE-12	MK-EDGE-30
20	Uniswivel Assembly	1	EDGE-002	EDGE-002	EDGE-004	EDGE-004	EDGE-012	EDGE-012	EDGE-012
21	Swivel Post 360 X 180	1	EDGE-002-POST	EDGE-002-POST	EDGE-004-POST	EDGE-004-POST	EDGE-012-POST	EDGE-012-POST	EDGE-012-POST
22	Thrust Plate, Reaction Arm	1	MXT-.7-367	MXT-01-367	MXT-03-367	MXT-05-367	EDGE-08-367	MXT-10-367	EDGE-30-367
23	Catch Lever	1	MXT-.7-328	MXT-01-328	MXT-03-328	MXT-05-328	MXT-05-328	MXT-10-328	MXT-20-328
24	Screw, Thrust Plate	2	MXT-.7-503	MXT-01-503	MXT-03-503	MXT-05-503	MXT-05-503	MXT-10-503	MXT-20-503
25	Lever Pin, Reaction Arm	1	MXT-.7-509	MXT-01-509	MXT-03-509	MXT-05-509	MXT-05-509	MXT-10-509	MXT-20-509
26	Lever Spring, Reaction Arm	1	MXT-.7-508	MXT-01-508	MXT-03-508	MXT-05-508	MXT-05-508	MXT-10-508	MXT-20-508
27	Roll Pin For Boot	2	MXT-.7-44	MXT-01-44	MXT-03-44	MXT-05-44	MXT-05-44	MXT-10-44	EDGE-30-44
28	Reaction Arm Boot	1	MXT-.7-43	MXT-01-43	MXT-03-43	MXT-05-43	EDGE-08-43	EDGE-12-43	EDGE-30-43
29	Uniswivel Screw	4	EDGE-02-SS	EDGE-02-SS	EDGE-04-SS	EDGE-012-SS	EDGE-012-SS	EDGE-012-SS	EDGE-012-SS
30	Uniswivel Retaining Ring	1	MXT-01-504	MXT-01-504	MXT-03-504	MXT-03-504	MXT-10-504	MXT-10-504	MXT-10-504
31	Male Coupler	1	090155-1/8	090155-1/8	090155-1/4	090155-1/4	090155-1/4	090155-1/4	090155-1/4
32	Female Coupler	1	090156-1	090156-1	090156	090156	090156	090156	090156
33	Drive Plate Roll Pin	1	EDGE-02-17	EDGE-02-17	EDGE-04-17	EDGE-06-17	EDGE-08-17	EDGE-12-17	EDGE-30-17
34	Catch Lever ASM	1	MXT.7-28	MXT-01-28	MXT-03-28	MXT-05-28	MXT-05-28	MXT-10-28	MXT-20-28

HYTORC owns all content, copyrights, trademarks and patents in this document. © 2022 HYTORC. Any unauthorized use or distribution of any material from this document is strictly prohibited.



Headquarters:
333 Route 17 N., Mahwah, NJ 07430
+1-201-512-9500

Email:
info@hytorc.com

Phone:
1-800-FOR-HYTORC

Online:
hytorc.com